



HAZEL COURT

Porcelain and Decorative Stainless Steel Facade



Cristofori
SIONAL

PROJECT BRIEF

OVERVIEW

The original enquiry was for a natural stone 40mm thick Moleanos facade for a five storey residential project in Hazel Court, London.

Due to the loading requirements, our 30mm lightweight Cristolite panel with Moleanos was specified on the project. After a review of the budget, we proposed a more cost-effective alternative Moleanos-effect 15mm porcelain panel at an equivalent technical performance with an even lower weight.

The porcelain panel was custom finished to achieve a Moleanos-effect look with custom bronze coated stainless steel panels to provide interest and character to the facade.

SCOPE OF WORKS

Design, fabrication and installation of all elements of the facade including the porcelain and bronze stainless steel cladding panels, capping stones and aluminium subframe system.

Moleanos-effect Porcelain Cladding - 700m²

Bronze Stainless Steel Cladding - 60m²

TECHNICAL REQUIREMENTS

FIRE RATING

Meets the requirements of A2 s1 d0 fire rating

LOADING

Porcelain Cladding - 37kg/m²

Stainless Steel Cladding - 13kg/m²

PANEL SIZES

Porcelain Cladding - 2.615m x 0.85m

Stainless Steel Cladding - 2.615m x 0.85m





IN-HOUSE DESIGN

Turning the design proposal into useful construction and manufacturing design was completed using our in-house designers and architects. This level of collaboration ensures a thorough understanding for manufacturing and installation.

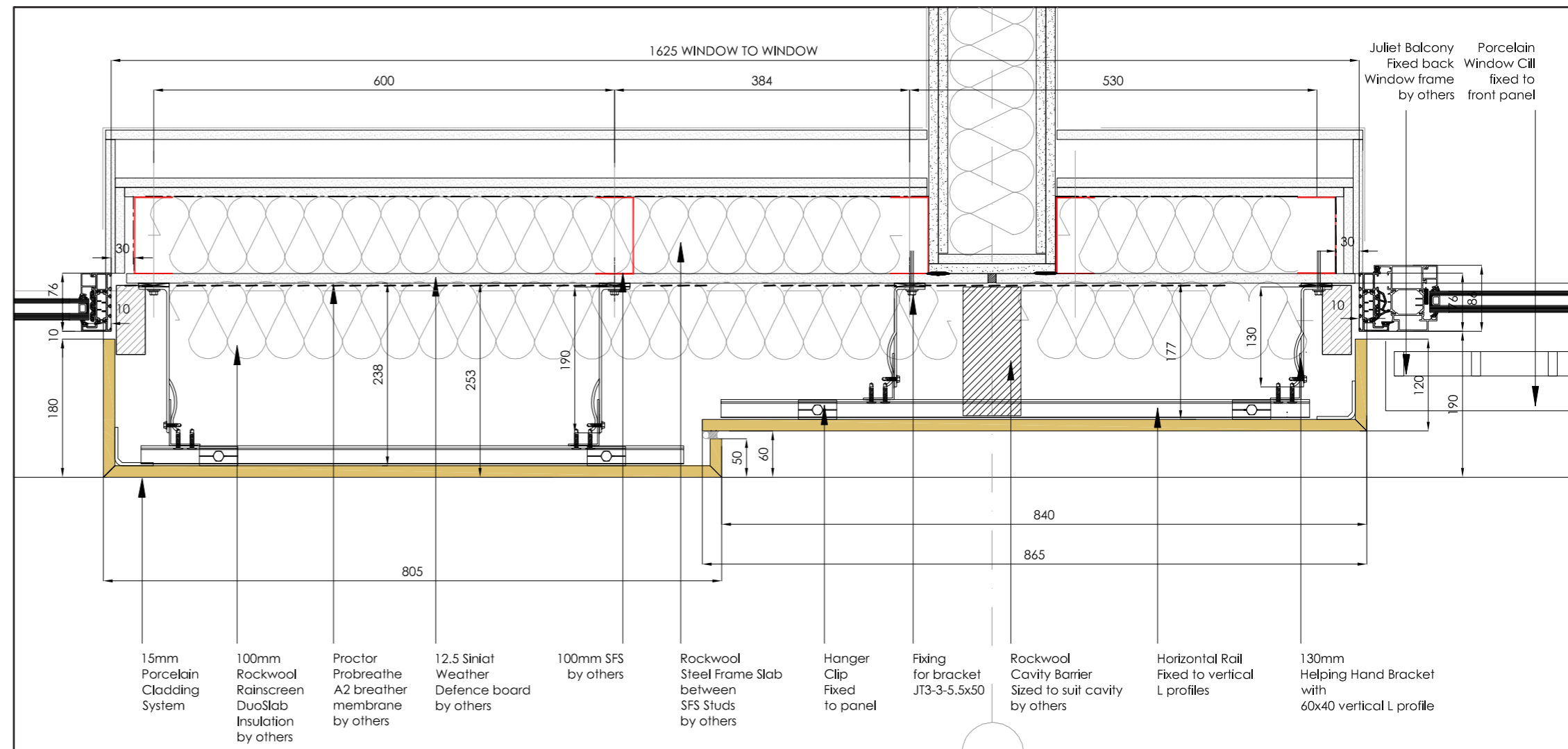
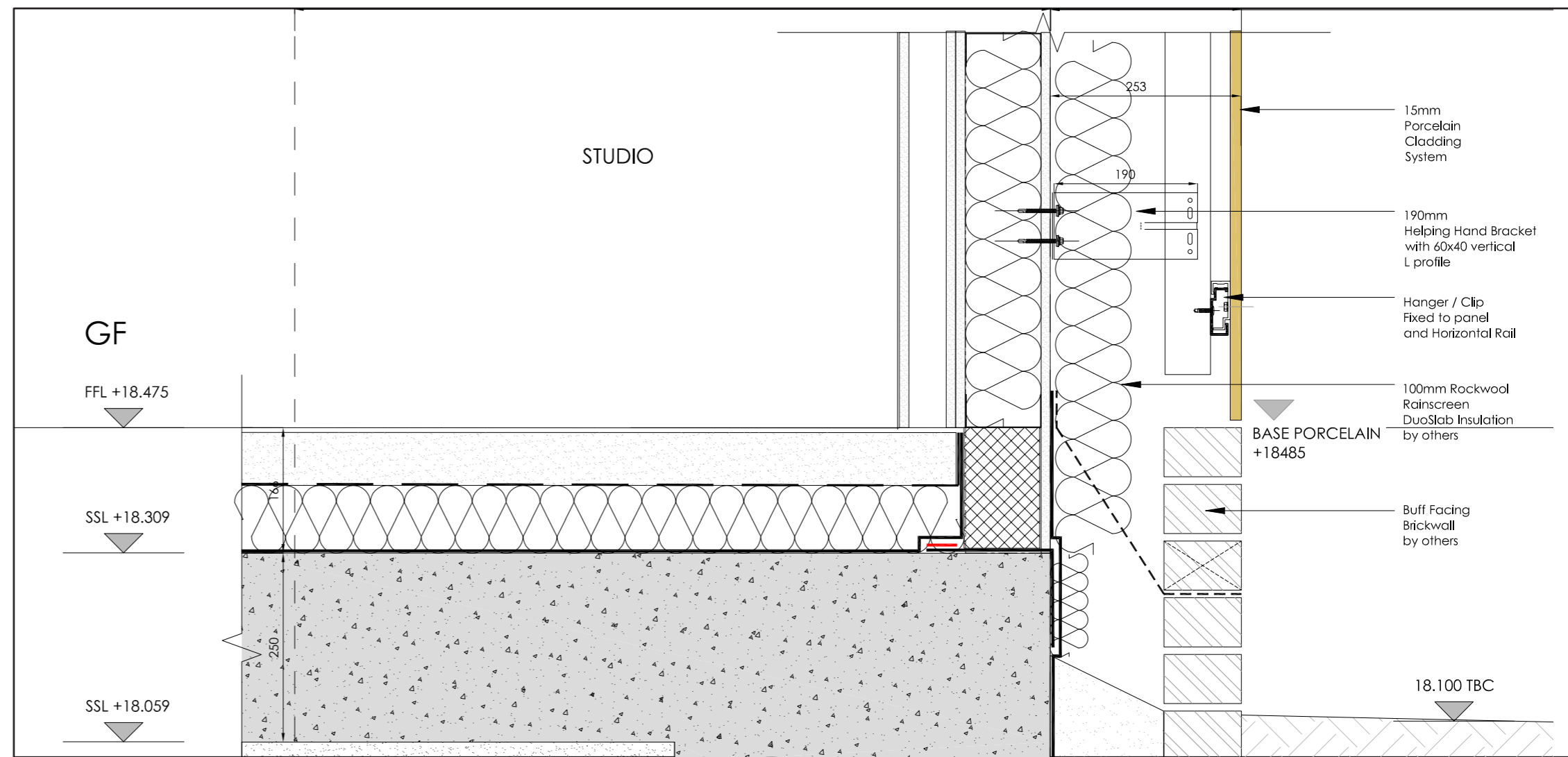
KEY FEATURES

- Rail support system for 'hanging' cladding panels
- Extensive material testing & supporting static and dynamic loading calculations

UK MANUFACTURE

All panels are manufactured in our UK factory and delivered to site pre-fabricated with pre-formed angles and hangars fixed ready to install.

Due to differences on site with the project drawings, any re-clarification of details and measurements for individual panels could be actioned and delivered to site in very short turnaround times.



INSTALLATION

Each panel is coded and carefully packaged with supporting drawings relating the part to its exact location on the façade. The use of mastclimbers and scissor lifts give installers the means to quickly install as per site conditions.

Each panel is hung onto the subframe system. The joints are then filled with silicone joint filler, as opposed to mortar, to allow for thermal expansion and contraction. This negates the need for repointing joints at a later date.



AESTHETIC DETAILS

The stepped depth feature and bronze coated panels were key design elements to add more depth and character to the facade.







www.cristofoli.net
sales@cristofoli.net
+44 (0)2380 661234



Cristofoli
REGIONAL